

TEMPOMATIC DUAL CONTROL WC

Electronic and time flow direct flush WC valve recessed in an innovative housing



Design



Hygiene
No water stagnation



Water savings



Easy to install



Waterproof recessed area



Ref. DELABIE: 464SBOX-464000

The TEMPOMATIC dual WC valve features an innovative recessing housing, patented by DELABIE. It adapts to all types of installation and can be installed on walls from 10 - 120mm thick. Its resolutely modern wall plate combines design and vandal-resistance. It has an “intelligent” rinsing system.

Hygiene

The TEMPOMATIC dual control flush can be activated voluntarily via the push-button or, failing that, automatically when the user leaves. This dual control guarantees permanent hygiene for the WC pan, even if the user forgets or neglects to flush the WC. The duty flush prevents bacterial proliferation and ensures that the pipework is flushed every 24 hours when not in use.

Water savings

DELABIE has developed an “intelligent” rinse function in the automatic mode. The system can distinguish between the need for a short rinse or a longer flush (3L/6L can be adjusted to 2L/4L).

Design

The TEMPOMATIC dual control wall plate has a timeless design, available in satin finish stainless steel with a chrome-plated metal push-button. Thanks to its sleek lines, it fits perfectly in any type of public and commercial building. This new concept combines design and functionality: the electronics are integrated directly in the wall plate.

Resistant to intensive use and vandalism

The wall plate, made from satin finish stainless steel, will withstand extreme levels of demand. The fixings are concealed. To prevent abuse or waste in the voluntary mode, TEMPOMATIC dual control is fitted with an AB anti-blocking system. This security feature prevents the valve from being blocked in the open position. The flush takes place only when the push-button is released.

Quick and easy to install

There are multiple installation options for the housing: fixing via the sides onto plasterboard rails, from the front on to a solid wall, or from the rear onto a panel. The housing length can be cut to size to adjust to walls up to 120mm: bricks or concrete blocks for public and commercial installations subject to high levels of vandalism. The TEMPOMATIC dual control connects from the outside of the housing to a standard installation or a “pipe-in-pipe” connection.

Secure system flush

During installation, the electronic unit is replaced by a temporary cap to facilitate and secure the system flush, without risking any damage to this sensitive element.

Waterproof recessing

Standard housings on the market are designed to be cut to size flush to the wall, which increases the risk of leaks into the wall. DELABIE has developed a housing that can be cut to size in front of the collar, which ensures a perfect seal. The housing has notches to clip the collar onto and fix it in place easily (patented system).

Minimal servicing and simple to maintain

The electronic unit, activation unit and stopcock are all accessible from the front. Simply remove the wall plate to gain access. Unlike other standard products on the market, TEMPOMATIC dual control's backflow prevention device is located inside the housing. In case of backflow, the water will evacuate in front of the wall, via the housing, and not behind (or into) the wall. The flush valve is suitable for grey water and sea water. The flush valve can be disconnected and removed from the inside, without removing the housing, for in-depth maintenance or protecting from frost.

WINNER OF MULTIPLE AWARDS:



PRODUCT BRIEF / TEMPOMATIC DUAL CONTROL WC

Electronic and time flow direct flush valve recessed in an innovative housing

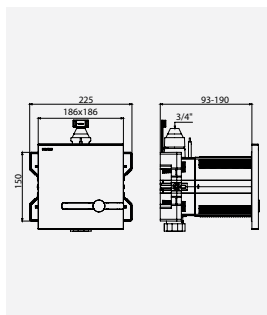
The new TEMPOMATIC dual control electronic direct flush valve combines design, hygiene and vandal-resistance. The sleek design of the satin finish stainless steel wall plate fits perfectly with any type of public or commercial building. The same housing can be installed on multiple support types: plasterboard rails, solid walls or panels.

DELABIE has developed an “intelligent” rinse function in the automatic mode. The system can distinguish between the need for a short rinse or a longer flush (3L/6L can be adjusted to 2L/4L). Battery-operated or mains supply versions available.

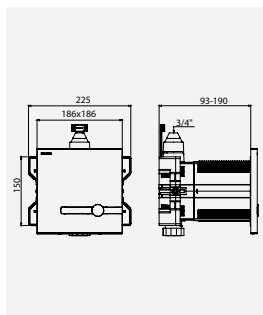
Images available on our website delabie.co.uk, in the PRESS section



TEMPOMATIC dual control
Ref. DELABIE:
464SBOX-464000
or 464PBOX-464006



TEMPOMATIC dual control mains supply
Ref. DELABIE:
464SBOX-464000



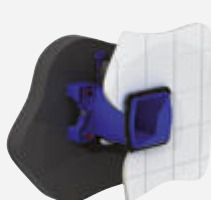
TEMPOMATIC dual control battery-operated
Ref. DELABIE:
464PBOX-464006

A SINGLE PRODUCT FOR ALL TYPES OF INSTALLATION

ADJUSTABLE FINS



PLASTERBOARD RAILS

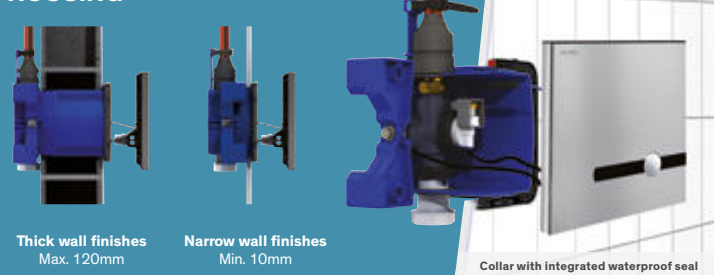


SOLID WALLS



PANELS

ADJUSTABLE WATERPROOF HOUSING



Thick wall finishes
Max. 120mm

Narrow wall finishes
Min. 10mm

Collar with integrated waterproof seal



Secure system push



Installation example

DELABIE, manufacturer's expertise

DELABIE, a 100% family-owned French company, founded in 1928, is the European market leader in water controls and sanitary equipment for public and commercial places. The company offers five product ranges specifically for this market: Commercial water controls, Hospital water controls, Accessibility and Hygienic accessories, Stainless steel sanitary ware and Specialist water controls.

Over 2,000 DELABIE manufactured items, including international references, are exported from its factory in France to more than 90 countries.

The company has 9 subsidiaries worldwide: Germany, Austria, Benelux, United Kingdom, Spain, Portugal, Poland, United Arab Emirates (Dubai) and China (Hong-Kong).

Find DELABIE on these social networks



CONTACTS

PR
Carole ARMSTRONG
Tel. (01491) 821820
carole.armstrong@delabie.co.uk

ADVERTISING
Ulysses IVERSON
Tel. +33 (0)3 64 50 91 10
ulysses.iverson@delabie.co.uk